

AUDIO  
SYSTEM

# CATALOGUE 2010/2011



H SERIES  
for AUDIO SYSTEM

HIGH PERFORMANCE CAR HIFI PRODUCTS  
DESIGNED IN GERMANY

# SERIES

BY AUDIO SYSTEM

PURE POWER..!



## HELON 9000.1

Digital Class-D Linkable Mono Block Amplifier

Up to 86% Efficiency at 4 ohm, 100Hz

0 to 180° Phase Shift

Dual Mosfet Power Supplies

1 Ohm stable

24 dB Low Pass

24 dB Subsonic

Operating Voltage: DC 10 ~ 18 V power input

Massiv heavy aluminium-heatsink with fan cooling

### AWARDS 2009

DB DRAG/CUP

1x World champion

2x Second world champion

2x European champion

5x German champion

5x WORLD RECORD

over 60x 1. Place  
with HELON 15 SPL  
&

over 20x 1. Place  
with HELON 12 SPL

... more on [www.audio-system.net](http://www.audio-system.net)

## HELON 9000.1

### Output power

- RMS power @ 1 Ohm (12.0 V)	1x 5800 W
- RMS power @ 1 Ohm (14.4 V)	1x 9000 W
- RMS power @ 1 Ohm (16.0 V)	1x 10500 W
- RMS power @ 1 Ohm (18.0 V)	1x 11500 W

Bass Boost ( 0 ~ 6 dB) frequency range 45 Hz

Frequency response 10 Hz ~ 350 Hz (+/- 1dB)

Distortion factor 10 Hz ~ 60 Hz

Dimensions 1000(l) x 75(w) x 300(w)

### Output power at 14.4 V

- RMS power @ 4 Ohm stereo

- RMS power @ 2 Ohm stereo

- RMS power @ 1 Ohm stereo

- RMS power @ 4 Ohm bridged

- RMS power @ 2 Ohm bridged

Bass Boost ( 0 ~ 6 dB) frequency range

Frequency response

Distortion factor

Channel separation

Dimensions

# SOUND, POWER AND CONTROL = AUDIO SYSTEM

## M-SERIES



**MX 60.4**

**Mittelklasse**  
Preis/Leistung:  
sehr gut **1,2**  
**CAR & HI-FI** Ausgabe 5/2009  
Äußerst unternehmisch dynamische  
Verstärkerleistung

4-Channel High Power Class-AB amplifier with SMD technology  
MOS-FET PWM Power Supply  
Stable into 2 ohm stereo per channel and 4 ohm bridged mode  
Input Sensitivity: variable 200 mV maximum to 8 V minimum  
Multi-Way-Protection-Circuitry  
Operating Voltage: DC 10 ~ 16 V power input  
Massiv heavy aluminium-heatsink with fan cooling



**MX 120.2**

2-Channel High Power Class-AB amplifier with SMD technology  
MOS-FET PWM Power Supply  
Stable into 2 ohm stereo per channel and 4 ohm bridged mode  
Input Sensitivity: variable 200 mV maximum to 8 V minimum  
Multi-Way-Protection-Circuitry  
Massiv heavy aluminium-heatsink with fan cooling  
Wired Remote Controller RTC (optional)

## R-SERIES



**RADION 100.4**

**NEW**

4-Channel High Power Class-AB amplifier with SMD technology  
MOS-FET PWM Power Supply  
Stable into 2 ohm stereo per channel and 4 ohm bridged mode  
Input Sensitivity: variable 200 mV maximum to 8 V minimum  
Multi-Way-Protection-Circuitry  
Operating Voltage: DC 10 ~ 16 V power input  
Massiv heavy aluminium-heatsink with fan cooling



**RADION 180.2**

2-Channel High Power Class-AB amplifier with SMD technology  
MOS-FET PWM Power Supply  
Stable into 2 ohm stereo per channel and 4 ohm bridged mode  
Input Sensitivity: variable 200 mV maximum to 8 V minimum  
Multi-Way-Protection-Circuitry  
Massiv heavy aluminium-heatsink with fan cooling  
Wired Remote Controller RTC (optional)

### MX 60.4

4x 60 W

4x 100 W

2x 200 W

45 Hz

10 Hz ~ 60 KHz (+/- 1 dB)

< 0,06%

75 dB

312(l) x 58(h) x 180(w) mm

### MX 120.2

2x 120 W

2x 200 W

1x 400 W

35 ~ 90 Hz

10 Hz ~ 60 KHz (+/- 1 dB)

< 0,035%

75 dB

312(l) x 58(h) x 180(w) mm

### RADION 100.4

**NEW**

4x 100 W

4x 145 W

2x 290 W

45 Hz

10 Hz ~ 60 KHz (+/- 1 dB)

< 0,041%

75 dB

353(l) x 58(h) x 180(w) mm

### RADION 180.2

2x 180 W

2x 270 W

1x 540 W

35 ~ 90 Hz

10 Hz ~ 60 KHz (+/- 1 dB)

< 0,07%

75 dB

353(l) x 58(h) x 180(w) mm

# SERIES

BY AUDIO SYSTEM



SOUND,  
POWER AND  
CONTROL  
= AUDIO SYSTEM



## X--ION 70.4

4-Channel High Power Class-AB amplifier with SMD technology  
**FULL MOS-FET** amplifier  
 Stable into 2 ohm stereo per channel and 4 ohm bridged mode  
 Input Sensitivity: variable 200 mV maximum to 8 V minimum  
 Multi-Way-Protection-Circuitry  
 Operating Voltage: DC 10 ~ 16 V power input  
 Massiv heavy aluminium-heatsink



## X--ION 160.4

4-Channel High Power Class-AB amplifier with SMD technology  
**FULL MOS-FET** amplifier  
 Stable into 1 ohm stereo per channel and 2 ohm bridged mode  
 Input Sensitivity: variable 200 mV maximum to 8 V minimum  
 Multi-Way-Protection-Circuitry  
 Operating Voltage: DC 10 ~ 16 V power input  
 Massiv heavy aluminium-heatsink with fan cooling

SERIES  
BY AUDIO SYSTEM

### Output power at 14.4 V

- RMS power @ 4 Ohm stereo  
 - RMS power @ 2 Ohm stereo  
 - RMS power @ 1 Ohm stereo  
 - RMS power @ 4 Ohm bridged  
 - RMS power @ 2 Ohm bridged

### X--ION 70.4

4x 70 W  
 4x 90 W  
 4x 300 W  
 2x 180 W  
 2x 605 W

### X--ION 160.4

4x 160 W  
 4x 240 W  
 4x 300 W  
 2x 480 W  
 2x 605 W

### Bass Boost ( 0 ~ 6 dB) frequency range

Frequency response

Distortion factor

Channel separation

Dimensions

10 Hz ~ 40 KHz (+/- 1 dB)

< 0.02%

75 dB

230(l) x 58(h) x 180(w) mm

45 Hz

10 Hz ~ 105 KHz (+/- 1 dB)

< 0.01%

75 dB

564(l) x 58(h) x 180(w) mm



## X--ION 100.2

2-Channel High Power Class-AB amplifier with SMD technology  
**FULL MOS-FET** amplifier  
 Stable into 1 ohm stereo per channel and 2 ohm bridged mode  
 Input Sensitivity: variable 200 mV maximum to 8 V minimum  
 Multi-Way-Protection-Circuitry  
 Operating Voltage: DC 10 ~ 16 V power input  
 Massiv heavy aluminium-heatsink with fan cooling



## X--ION 160.2

2-Channel High Power Class-AB amplifier with SMD technology  
**FULL MOS-FET** amplifier  
 Stable into 1 ohm stereo per channel and 2 ohm bridged mode  
 Input Sensitivity: variable 200 mV maximum to 8 V minimum  
 Multi-Way-Protection-Circuitry  
 Operating Voltage: DC 10 ~ 16 V power input  
 Massiv heavy aluminium-heatsink with fan cooling  
 Wired Remote Controller **RTC** (optional)



## X--ION 280.2

2-Channel High Power Class-AB amplifier with SMD technology  
**FULL MOS-FET** amplifier  
 Stable into 1 ohm stereo per channel and 2 ohm bridged mode  
 Input Sensitivity: variable 200 mV maximum to 8 V minimum  
 Multi-Way-Protection-Circuitry  
 Operating Voltage: DC 10 ~ 16 V power input  
 Massiv heavy aluminium-heatsink with fan cooling  
 Wired Remote Controller **RTC** (optional)

1. **WORLD RECORD 2009**  
 dB-Cup - Class Supra 3+  
 with  
 3x **RADION 18 FA**  
 1x **X--ION 280.2**  
 [.. **165.2 dB** ..]

## ACCESSORIES



**SERIES RTC**  
 REMOTE CONTROL  
 Compatible with all 2-Channel **SERIES**  
 (except X--ION 100.2)

**HLC<sub>2</sub>**  
 2-CHANNEL HIGH/LOW  
 CONVERTER  
 Automatic remote



### X--ION 100.2

2x 100 W  
 2x 190 W  
 2x 250 W  
 1x 380 W  
 1x 500 W

-  
 10 Hz ~ 50 KHz (+/- 1 dB)  
 < 0,02%  
 75 dB  
 230(l) x 58(h) x 180(w) mm

### X--ION 160.2

2x 160 W  
 2x 270 W  
 2x 375 W  
 1x 530 W  
 1x 750 W

35 ~ 90 Hz  
 10 Hz ~ 60 KHz (+/- 1 dB)  
 < 0,02%  
 75 dB  
 350(l) x 58(h) x 180(w) mm

### X--ION 280.2

2x 280 W  
 2x 480 W  
 2x 740 W  
 1x 960 W  
 1x 1480 W

35 ~ 90 Hz  
 10 Hz ~ 110 KHz (+/- 1 dB)  
 < 0,02%  
 75 dB  
 563(l) x 58(h) x 180(w) mm



**HIGH END  
MADE IN GERMANY ..!**



## FACTS:

- aluminium membrane • 2,5" voice coil • cast basket • connex-spider
- impedance 2 x 4 Ohm • stable terminals • made in Germany

## HX 10 PHASE

25 CM HIGH-END SUBWOOFER  
2x 300/200 Watt  
Installation depth 143 mm



## HX 12 PHASE

30 CM HIGH-END SUBWOOFER  
2x 375/250 Watt  
Installation depth 152 mm



The new HX 12 PHASE and HX 10 PHASE are the absolute High-End woofers from AUDIO SYSTEM. They are the evolution of the advanced HX SQ woofer line, which were very successful in tests and competition. The incredible dynamic and the excellent efficiency are only two important points. These "Made in Germany" woofer will follow the success of the Sound Quality HXLINE..!

## HX 12 SQ

30 CM HIGH-END SUBWOOFER  
Compound membrane of paper and glass fibre  
2" voice coil  
500/350 Watt - Impedance 4 Ohm  
Installation depth 147 mm  
EUR 200,-



Fig. HX 12 SQ

## HX 10 SQ

25 CM HIGH-END SUBWOOFER  
Compound membrane of paper and glass fibre  
2" voice coil  
450/300 Watt - Impedance 4 Ohm  
Installation depth 135 mm  
EUR 160,-

## HX 08 SQ

20 CM HIGH-END SUBWOOFER  
Compound membrane of paper and glass fibre  
1.5" voice coil  
300/200 Watt - Impedance 4 Ohm  
Installation depth 100 mm  
EUR 110,-



Fig. HX 08 SQ

## HX 08 SQ G

7 L SEALED BOX  
300/200 Watt - 20 cm HX 08 SQ Subwoofer  
Highly rigid material box of MDF  
Measures: l= 30cm, h= 25cm, d1= 15cm, d2= 23cm  
EUR 280,-



## HX 12 SQ BR

48 L VENTED BOX  
500/350 Watt - 30 cm HX 12 SQ Subwoofer  
Highly rigid material box of MDF  
varnished black front  
Measures: l= 80cm, h= 40cm, d1= 15cm, d2= 29,5cm  
EUR 290,-



Fig. HX 08 SQ BR

## HX 10 SQ BR

29 L VENTED BOX  
450/300 Watt - 25 cm HX 10 SQ Subwoofer  
Highly rigid material box of MDF  
Measures: l= 55cm, h= 35,5cm, d1= 20cm, d2= 32,5cm  
EUR 240,-



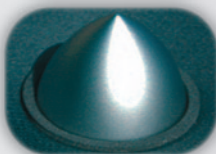
Fig. HX 12 SQ BR

## HX 08 SQ BR

15 L VENTED BOX  
300/200 Watt - 20 cm HX 08 SQ Subwoofer  
Highly rigid material box of MDF  
Measures: l= 37cm, h= 29cm, d1= 21cm, d2= 31,5cm  
EUR 180,-



**HIGH END  
MADE IN GERMANY ..!**



## FACTS:

- developed and produced in Germany. • impedance 4 Ohm
- EX PHASE midrange woofer • compound membrane • cast basket • phaseplug • coppercap
- HS28VOL 28 mm tweeter • soft dome • rear chamber • fs = 760 Hz
- FWHXPHASE crossover • 2-way • over 3000 possibilities to set up the system

## HX 165 PHASE MK II

2-WAY COMPONENT SYSTEM

2 x 220/140 Watt

38 mm voice coil - 165 mm standard basket

Installation depth: 68 mm



## HX 130 PHASE

2-WAY COMPONENT SYSTEM

2 x 130/90 Watt

25 mm voice coil - 130 mm standard basket

Installation depth: 58 mm



## HX 100 PHASE

2-WAY COMPONENT SYSTEM

2 x 120/80 Watt

25 mm voice coil - 130 mm standard basket

Installation depth: 51 mm





## HXDUST: HIGHEST QUALITY, DYNAMIC SOUND..!

### FACTS:

- developed and produced in Germany • impedance 4 Ohm
- EX DUST midrange woofer • compound membrane • standard cast basket
- HS25VOL 25 mm tweeter • soft dome • rear chamber • fs = 880 Hz
- FWX crossover • 2-way • 12 dB • 168 possibilities to set up the system

### HX 165 DUST MK II

#### 2-WAY COMPONENT SYSTEM

2 x 220/140 Watt

38 mm voice coil

Installation depth: 68 mm



Fig. HX 165 DUST

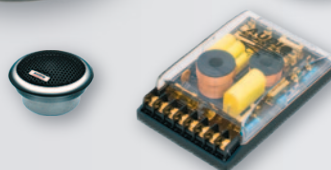
### HX 130 DUST

#### 2-WAY COMPONENT SYSTEM

2 x 130/90 Watt

25 mm voice coil

Installation depth: 58 mm



### HX 100 DUST

#### 2-WAY COMPONENT SYSTEM

2 x 120/80 Watt

25 mm voice coil

Installation depth: 51 mm

### HX 165-4

#### 2-WAY DOUBLE COMPONENT SYSTEM

2x 440/280 Watt - Impedance 2 Ohm

38 mm voice coil - 2 x 165 mm standard basket

Installation depth: 68 mm

## HXSQ: HIGHEST QUALITY, DYNAMIC SOUND..!

### FACTS:

- developed and produced in Germany • impedance 4 Ohm
- EX SQ midrange woofer • compound membrane • 25 mm voice coil • standard basket
- HS25PRO 25 mm tweeter • soft dome • several mounting accessories
- FWX crossover • 2-way • 12 dB • 168 possibilities to set up the system

### HX 165 SQ

#### 2-WAY COMPONENT SYSTEM

2 x 140/100 Watt

Installation depth: 65 mm



### HX 130 SQ

#### 2-WAY COMPONENT SYSTEM

2 x 130/90 Watt

Installation depth: 60 mm



### HX 100 SQ

#### 2-WAY COMPONENT SYSTEM

2 x 120/80 Watt

Installation depth: 51 mm

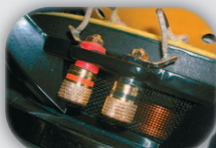


Fig. HX 130 SQ

# HELON<sup>LINE</sup>

## THE WINNER...!

especially developed for SPL

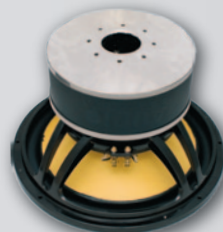


### FACTS:

- 4" double voice coil • 2 x 2 ohm impedance • glass fibre membrane
- die-cast aluminium basket • sewed-in rubber surrounding
- 38-times ventilation system • double spider

## HELON 15 SPL

38 CM HIGH-POWER SUBWOOFER  
2 x 1500/1000 Watt - 10.000 Watt Peak --- 60 Hz  
Installation depth 218 mm - Weight 24 kg



## HELON 12 SPL

30 CM HIGH-POWER SUBWOOFER  
2 x 1200/800 Watt - 8.000 Watt Peak --- 60 Hz  
Installation depth 199 mm - Weight 19 kg



### AWARDS 2009

DB DRAG/CUP  
1x World champion  
2x Second world champion  
2x European champion  
5x German champion

5x WORLD RECORD

over 60x 1. Place  
with HELON 15 SPL  
&  
over 20x 1. Place  
with HELON 12 SPL

... more on [www.audio-system.net](http://www.audio-system.net)

## FACTS:

- especially developed to be driven by an amplifier • optimised air flow
- perfect compromise between stability, installation depth and power capacity
- AX165c kick-bass • kevlar membrane • 38 mm voice coil • 165 mm standard basket
- AX130c midrange woofer • kevlar membrane • 32 mm voice coil • 130 mm standard basket
- HS25PRO 25 mm tweeter • soft dome • several mounting accessories
- FWX-2 crossover • 2-way • 12 dB • 168 possibilities to set up the system



> 2 Ohm nominal impedance <

## HELON 165

2-WAY COMPONENT SYSTEM

2 x 225/150 Watt

Installation depth: 72 mm

Installation diameter: 144 mm



## HELON 130

2-WAY COMPONENT SYSTEM

2 x 180/120 Watt - Impedance 4 Ohm

Installation depth: 61 mm

Installation diameter: 118 mm



> 2 Ohm nominal impedance <

## HELON 165-4

2-WAY DOUBLE-COMPONENT SYSTEM

2 x 450/300 Watt

Installation depth: 72 mm

Installation diameter: 144 mm



## THE HYPE..!



### FACTS:

- 3" voice coil • double spider • sewed lead wires • pressure connecting terminals
- high-strength compound fibre membrane • multiple vented cast basket
- magnet protection • removable ring of aluminium • sewed surrounding/ membrane

### X--ION 15-1000

38 CM LONG-STROKE-SUBWOOFER  
2 x 750/500 Watt - Impedance 2 x 4 Ohm  
3" double voice coil  
Installation depth 207 mm

### X--ION 12-800

30 CM LONG-STROKE-SUBWOOFER  
2 x 600/400 Watt - Impedance 2 x 4 Ohm  
3" double voice coil  
Installation depth 158 mm

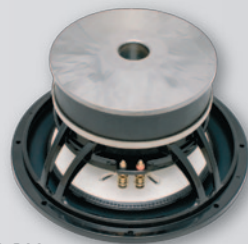


Fig. X--ION 12-800

### AWARDS 2009

DB DRAG/CUP

2x Second world champion

1x German champion

5x German second champion

... more on [www.audio-system.net](http://www.audio-system.net)

### X--ION 12-800 BR

60 L VENTED BOX  
2 x 600/400 Watt - 30 cm X--ION 12-800 Subwoofer  
Highly rigid material box of MDF  
varnished black front  
Measures: l= 78cm, h= 40cm, d1= 20cm, d2= 34cm

**CAR & HI-FI**  
**TESTSIEGER**

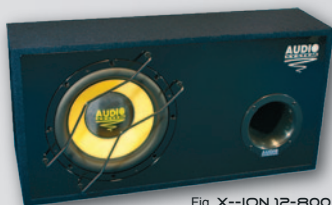


Fig. X--ION 12-800 BR



## X--ION 15 PLUS

38 CM LONG-STROKE-SUBWOOFER  
1200/800 Watt - Impedance 4 Ohm  
3" voice coil - Double spider

## X--ION 12 PLUS

30 CM LONG-STROKE-SUBWOOFER  
900/600 Watt - Impedance 4 Ohm  
3" voice coil - Double spider  
Installation depth 157 mm

## X--ION 10 PLUS

25 CM LONG-STROKE-SUBWOOFER  
500/350 Watt - Impedance 4 Ohm  
2" voice coil - Double spider  
Installation depth 143 mm



Fig. X--ION 10 PLUS



Fig. X--ION 15 PLUS

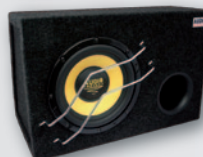
## X--ION 12 PLUS BR

46 L VENTED BOX  
900/600 Watt - 30 cm X--ION 12 PLUS Subwoofer  
Highly rigid material box of MDF  
Varnished black front  
Measures: l= 78cm, h= 38cm, d1= 19cm, d2= 33cm



## X--ION 10 PLUS BR

29 L VENTED BOX  
500/350 Watt - 25 cm X--ION 10 PLUS Subwoofer  
Highly rigid material box of MDF  
Measures: l= 55cm, h= 36cm, d1= 20cm, d2= 32cm



## COMPONENT SYSTEMS

### FACTS:

- AS 165 C midrange woofer • kevlar membrane • 25 mm voice coil • vented standart basket
- HS25PRO 25 mm tweeter • soft dome • several mounting accessories
- FWX crossover • 2-way • 12 dB • 168 possibilities to set up the system

## X--ION 165

2-WAY COMPONENT SYSTEM  
2 x 140/100 Watt - Impedance 4 Ohm  
Installation depth: 62 mm

## X--ION 165-4

2-WAY DOUBLE COMPONENT SYSTEM  
2 x 280/200 Watt - Impedance 2 Ohm  
2 x 165 mm basket - Installation depth: 62 mm

## X--ION 130

2-WAY COMPONENT SYSTEM  
2 x 130/90 Watt - Impedance 4 Ohm  
Installation depth: 54 mm

## X--ION 100

2-WAY COMPONENT SYSTEM  
2 x 110/80 Watt - Impedance 4 Ohm  
Installation depth: 48 mm



Fig. X--ION 165

# RADION<sup>LINE</sup>

**DYNAMIC AND FULL BASS  
WITHOUT WASTING  
A LOT OF TRUNK SPACE..!**



## FACTS:

- air dried paper cone • vented basket and backplate • rugged terminals
- magnet protection • flexible top-quality rubber surround
- connex spider • 2,5" voice coil • impedance 4 ohm

## RADION 15 FA

38 CM FREE AIR SUBWOOFER  
650/450 Watt  
Double magnet  
Installation depth 175 mm

## RADION 12 FA

30 CM FREE AIR SUBWOOFER  
600/400 Watt  
Installation depth 138 mm

Uncompromising sound due to  
***FREE AIR..!***

## INFO: FREE AIR

Our FREE AIR Subs are especially suitable for vehicles with trunks because of their QTS. These QTS changes very little with the size of the trunk which leads to excellent transient response and dampening.



Fig. RADION 15 FA

## RADION 12 PLUS

30 CM SUBWOOFER  
600/400 Watt  
Double magnet  
Installation depth 157 mm

## RADION 10 PLUS

25 CM SUBWOOFER  
375/250 Watt  
Double magnet  
Installation depth 125 mm



Fig. RADION 10 PLUS

## AWARDS 2008

DB DRAG/CUP

5x German champion  
2x Second world champion

... more on [www.audio-system.net](http://www.audio-system.net)

## WORLD RECORD 2009

dB-Cup - Class Superpro B+

with

3x RADION 15 FA  
1x MOSCONI 300.2

**L.. 168 dB ..!**

## RADION 10 PLUS BR

29 L VENTED BOX

375/250 Watt - 25 cm RADION 10 PLUS Subwoofer

Highly rigid vented box of MDF

Measures: l= 55cm, h= 36cm, d1= 20cm, d2= 32cm



**autohifi**  
TESTSIEGER

**TESTSIEGER**  
Oberklasse 120 - 200 €  
**CAR & HIFI** 12.2006

## RADION 12 PLUS BR

46 L VENTED BOX

600/400 Watt - 30 cm RADION 12 PLUS Subwoofer

Highly rigid vented box of MDF

Measures: l= 76cm, h= 38cm, d1= 17cm, d2= 33cm



**autohifi**  
PEGELTIPP

**CAR & HIFI**  
PEGELTIPP

## RADION 12 PLUS BR-2

2 X 42 L VENTED DOUBLE BOX

2 x 600/400 Watt - 2 x 25 cm RADION 12 PLUS Subwoofer

Highly rigid vented box of MDF - Impedance 2 x 4 Ohm

Measures: l= 88cm, h= 36cm, d1= 34cm, d2= 47cm



## COMPONENT SYSTEMS



### FACTS:

- AS165C midrange woofer • kevlar membrane • 25 mm voice coil • vented standard basket
- HS19 19 mm tweeter • soft dome • several mounting accessories
- FWR crossover • 2-way • 12 dB • three high and three midrange frequencies adjustments

## RADION 165

2-WAY COMPONENT SYSTEM

2 x 130/90 Watt - Impedance 4 Ohm

Installation depth: 62 mm

## RADION 165-4

2-WAY DOUBLE COMPONENT SYSTEM

2 x 260/180 Watt - Impedance 2 Ohm

2 x 165 mm basket

Installation depth: 62 mm

## RADION 130

2-WAY COMPONENT SYSTEM

2 x 120/80 Watt - Impedance 4 Ohm

Installation depth: 54 mm

## RADION 100

2-WAY COMPONET SYSTEM

2 x 100/70 Watt - Impedance 4 Ohm

Installation depth: 48 mm

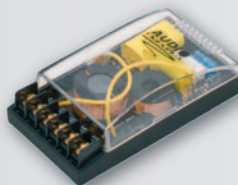


Fig. RADION 165

**autohifi** TESTURTEIL  
02/2007  
Spitzenklasse **60**  
Preis/Leistung ★★★★★

## THE GREAT ECONOMIC..!



autohifi: "...good quality and a lot of bass for not much money with the MX12BR."



Fig. MX 12 PLUS BR

### MX 12 PLUS

30CM SUBWOOFER  
450/300 Watt - Impedance 2 Ohm  
2" Voice coil  
Installation depth 125 mm

### MX 15 PLUS

38CM SUBWOOFER  
600/400 Watt - Impedance 4 Ohm  
2,5" Voice coil  
Installation depth 152 mm



Fig. MX12 PLUS BR-2 PLUS

### MX 12 PLUS BR

46L VENTED BOX  
450/300 Watt - 30 cm MX 12 PLUS Subwoofer  
Highly rigid vented box of MDF  
Measures: l= 80cm, h= 40cm, d1= 15cm, d2= 30cm

### MX 12 PLUS BR-2

2 X 42L VENTED DOUBLE BOX  
2 x 450/300 Watt - 2 x 30 cm MX 12 PLUS Subwoofer  
Highly rigid vented box of MDF - Impedance 2 x 4 Ohm  
Measures: l= 88cm, h= 36cm, d1= 34cm, d2= 47cm

## FACTS:

- MS165PLUS midrange woofer • glass fibre membrane • vented standard basket
- HS19W 19 mm tweeter • cable crossover • soft dome
- several mounting accessories

### MX 165 PLUS

2-WAY COMPONENT SYSTEM  
2 x 120/80 Watt - Impedance 4 Ohm  
Installation depth: 63 mm



### MX 100 PLUS

2-WAY COMPONENT SYSTEM  
2 x 100/60 Watt - Impedance 4 Ohm  
Installation depth: 51 mm

### MX 130 PLUS

2-WAY COMPONENT SYSTEM  
2 x 110/70 Watt - Impedance 4 Ohm  
Installation depth: 53 mm

autohifi: "...a sensation.  
The MX165 woofer pressed  
more than 106 dB at 90 Hz,  
a dream for a lot of 6,5" woofers!"



Fig. MX 165 PLUS



## CO 165 PLUS

### COAXIAL SYSTEM

2 x 120/80 Watt - Impedance 4 ohm

Glass fibre membrane - 19 mm neodymium tweeter

Installation depth: 63 mm - 165 mm standard basket



## CO 130 PLUS

### COAXIAL SYSTEM

2 x 110/70 Watt - Impedance 4 ohm

Glass fibre membrane - 19 mm neodymium tweeter

Installation depth: 53 mm - 130 mm standard basket



Fig. CO 165 PLUS

## CO 100 PLUS

### COAXIAL SYSTEM

2 x 100/60 Watt - Impedance 4 ohm

Glass fibre membrane - 19 mm neodymium tweeter

Installation depth: 51 mm - 100 mm standard basket

## CO 507 PLUS

### OVAL COAXIAL SYSTEM

2 x 120/80 Watt - Impedance 4 ohm

5" x 7" standard basket - Glass fibre membrane

19 mm Neodymium tweeter

Installation depth: 60 mm



## CO 609 PLUS

### OVAL COAXIAL SYSTEM

2 x 200/140 Watt - Impedance 4 ohm

6" x 9" standard basket - Glass fibre membrane

19 mm neodymium tweeter

external 12 dB crossover with tweeter protective devise

Installation depth: 78 mm



Fig. CO 609 PLUS

## MXC 165 PLUS

### COAXIAL SYSTEM

2 x 110/70 Watt - Impedance 4 ohm

Glass fibre membrane - 13 mm neodymium tweeter

Installation depth: 60 mm - 165 mm standard basket



Fig. MXC 100

## MXC 130 PLUS

### COAXIAL SYSTEM

2 x 100/60 Watt - Impedance 4 ohm

Glass fibre membrane - 13 mm neodymium tweeter

Installation depth: 50 mm - 130 mm standard basket



## MXC 100 PLUS

### COAXIAL SYSTEM

2 x 90/50 Watt - Impedance 4 ohm

Glass fibre membrane - 13 mm neodymium tweeter

Installation depth: 48 mm - 100 mm standard basket



Fig. MXC 165

## MXC 609 PLUS

### OVAL COAXIAL SYSTEM

2 x 150/100 Watt - Impedance 4 ohm

6" x 9" standard basket - Glass fibre membrane

19 mm neodymium tweeter

Installation depth: 74 mm

# SPECIAL COMPOS VW

Custom fit component systems for easy installation.  
Top-quality components offer a clear improvement in sound and load capacity in contrast to the original installation or sound systems.



## X--ION 200 GOLF V

### 3-WAY SPECIAL-COMPONENT SYSTEM

2x 170/120 Watt - 200 mm neodymium bass with adaptor ring for door installation  
120 mm neodymium midrange with paper membrane and drilled pole piece  
25 mm neodymium tweeter with soft dome membrane  
3-way plug & play cable crossover  
Tweeter protection and original VW-connector.



Fig. X--ION 200 GOLF V

## X--ION 165 GOLF VI NEW

### 2-WAY COMPONENT SYSTEM FOR VW GOLF VI, SCIROCCO (NEW)

2x 140/100 Watt  
165 mm kevlar midrange with adaptor ring  
HS 25 GOLF VI 25 mm special neodymium tweeter  
12 db high frequency cable crossover with fourfold adaptation  
Protective device and original VW-connector

## RADION 165 VW

### 2-WAY COMPONENT SYSTEM FOR VW GOLF IV, PASSAT, BORA, ...

2x 130/90 Watt  
165 mm kevlar midrange with adaptor ring  
25 mm neodymium tweeter  
12 db high frequency cable crossover with fourfold adaptation  
Protective device and original VW-connector

## X--ION 200 VW

### 2-WAY COMPONENT SYSTEM FOR VW GOLF IV, PASSAT, BORA, ...

2x 150/100 Watt  
200 mm midrange bass with adaptor ring  
25 mm neodymium tweeter  
12 db crossover with tweeter protection and four adjustments  
Original VW-connector



## MX 165 VW MK II

### 2-WAY COMPONENT SYSTEM FOR VW GOLF IV, PASSAT, BORA, ...

2x 120/80 Watt  
165 mm glass fibre midrange with adaptor ring  
25 mm neodymium tweeter and original VW-connector  
12 db crossover with tweeter protection and two adjustments

## X--ION 200 TS

### 2-WAY COMPONENT SYSTEM FOR VW VAN TS, TOURAN, ...

2x 150/100 Watt  
200 mm midrange bass with adaptor ring  
25 mm neodymium tweeter  
12 db crossover with tweeter protection and four adjustments  
Original VW-connector



Fig. X--ION 165 GOLF VI

# SPECIAL COMPOS **BMW**

## **X--ION 200 BMW**

### BMW 2 TIME ACTIVE COMPONENT SYSTEM

Suitable front system for BMW 5 series (E60, E61), 1 series (E81, E82, E87, E88), 3 series (E90, E91)  
Plug & Play

In case there is no factory speaker preparation in the mirror triangle, it is possible to buy this as an original spare part from a BMW dealer.

- 2x 120/80 Watt
- 12 db crossover with tweeter protection and four adjustments
- Complete wired - Impedance: 4 Ohm

#### **AX 08 BMW 200 mm neodymium bass**

- Very high performance and high efficiency
- Custom fit basket
- Lightweight and quick paper membrane
- First class gold-plated terminal

#### **HS 25 PRO 25 mm soft dome neodymium tweeter**

- Made in Germany - Ferrousfluid cooling

Matching amplifier (recommendation):

RADION 90.4 or MX 60.4

#### **AS 100 BMW 100 mm midrange**

- 25 mm voice coil
- Custom fit basket
- Paper membrane - Rubber surrounding
- First class gold-plated terminal



## **CO 100 BMW**

### BMW COAXIAL SYSTEM

Suitable for BMW 1 series (E81, E82, E87, E88), 3 series (E90, E91)

Quick installation as front system (exchange of the original broadband speakers in the door).

Easy installation, Plug & Play, no external crossover.

It's also possible to be combined with a 200 mm BMW bass-speaker (**AX 08 BMW**)

- 2 x 100/60 Watt
- 100 mm midrange speaker
- Custom fit basket
- Paper membrane
- 19 mm neodymium tweeter
- Impedance: 4 Ohm



## **X--ION 165 E46**

### 2-WAY COMPONENT SYSTEM FOR

#### ALL BMW E46 (EXCEPT FOR E46 COMPACT)

2 x 130/90 Watt - 165 mm glass fibre membrane with custom fit basket

HS 25 PRO 25 mm soft dome neodymium tweeter

12 db crossover with tweeter protection and four adjustments

EUR 200,-

## **RADION 165 E46**

### 2-WAY COMPONENT SYSTEM FOR

#### ALL BMW E46 (EXCEPT FOR E46 COMPACT)

2 x 130/90 Watt - 165 mm glass fibre membrane with custom fit basket

HS 19 soft dome neodymium tweeter with cable crossover



Fig. X--ION 165 E46



## X--ION 165 FLAT

### 2-WAY COMPONENT SYSTEM

2 x 130/90 Watt - Impedance 4 ohm

Kevlar membrane - Rubber surrounding

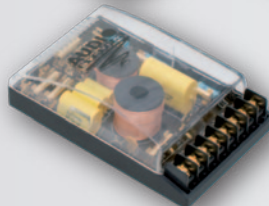
HS 25 PRO soft dome tweeter

FWX crossover with 168 possibilities to set up the system

Installation depth: 42 mm



Fig. X--ION 165 FLAT



## X--ION 130 FLAT

### 2-WAY COMPONENT SYSTEM

2 x 110/80 Watt - Impedance 4 ohm

Glass fibre membrane

HS 25 PRO soft dome tweeter

FWX crossover with 168 possibilities to set up the system

Installation depth: 32 mm

## RADION 165 FLAT

### 2-WAY COMPONENT SYSTEM

2 x 120/80 Watt - Impedance 4 ohm

Kevlar membrane - Rubber surrounding

HS 19 soft dome tweeter

FWR crossover with 9 possibilities to adjust

Installation depth: 42 mm

## RADION 130 FLAT

### 2-WAY COMPONENT SYSTEM

2 x 100/70 Watt - Impedance 4 ohm

Glass fibre membrane

HS 19 soft dome tweeter

FWR crossover with 9 possibilities to adjust

Installation depth: 32 mm



Fig. RADION 130 FLAT



## AX 08 FLAT

### 20 CM FREE AIR NEODYMIUM BASS

140/90 Watt - Impedance 4 ohm

Installation depth: 58mm



## AX 10 FLAT

### 25 CM FREE AIR NEODYMIUM BASS

160/100 Watt - Impedance 4 ohm

Installation depth: 69mm



# ACCESSORIES

## MICRO AH

### MEASURING MICROPHONE

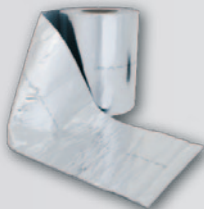
For the optimal calibration of your car audio system we recommend our microphone with amplifier. Supplied with 12 V cigarette lighter connection and 6,3 mm inline jack with a direct connection to a PC sound card.



## ALUBUTYL

### VEHICLE DAMPING

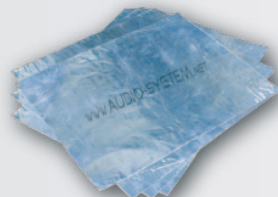
Width: 200 or 500 mm  
Gauge: 1,80 mm  
Butyl: 1,75 mm  
Alu 0,05 mm  
Weight per qm: 2,75 kg



## ALUBUTYL+

### VEHICLE DAMPING

Dimension: 500 x 1000 mm  
Gauge: 1,30 mm  
Butyl: 1,0 mm  
Alu 0,3 mm  
Weight per qm: 5,8 kg  
Ideal to fill big openings..!



## GLADEN<sup>®</sup> AUDIO



## CINCHBLACK

### HIGH-END RCA CABLE

Twisted pair balanced cinch-cable  
99,99% OFC

Available lengths:

75, 150, 250, 350, 500, 600 mm



## CINCHBLACK-Y

### HIGH-END RCA CABLE

Available as Y with male-male-female connector  
and YR with female-male-male connector



## CINCHPLUG

### HIGH-END RCA CABLE JACK

Available as male and female connector



## POLO-SHIRT

Available sizes: S, M, L, XL, XXL, XXXL

# Readers of the German magazine „autohifi“ voted "the best Car Audio Products"



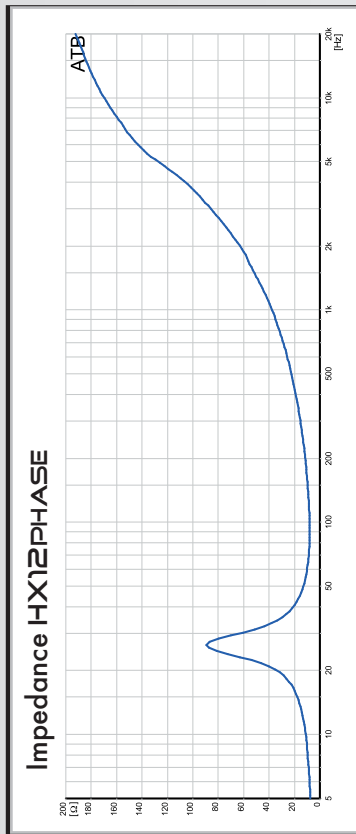
# AUDIO

## SYSTEM

AUDIO SYSTEM EUROPE GMBH

Model	HX08sq	HX10sq	HX12sq	Kryptolm12	Helion12sqPL	Helion15sqPL	X-ION10PLUS	X-ION12PLUS	X-ION15PLUS	X-ION12-800	X-ION15-1000	RADION10PLUS "black series"	RADION12PLUS "black series"	RADION15PLUS	MX12PLUS
Rdc Ohm	3,5	3,6	3,2	2,8	2x 1,9	2x 1,9	3,4	3,2	3,6	2x 3,8	2x 3,7	3,6	3,8	3,4	3,15
Qm	4,68	3,45	3,38	9,45	2,37	1,9	3,5	3,9	3,8	4,43	3,50	4,7	4,31	4,95	4,03
Qe	0,37	0,41	0,44	0,41	0,66	0,59	0,39	0,52	0,55	0,64	0,49	0,32	0,37	0,57	0,33
Qt	0,35	0,37	0,4	0,39	0,51	0,45	0,35	0,5	0,48	0,55	0,43	0,3	0,34	0,52	0,31
Fs Hz	45	38	34	37	38	36	32	40	39	39	33	28	26	24	24
Vas L	15	22	53	30	30	64	49	30	67	24	50	60	112,5	165	149
Mms g	50	120	138	191	203	298	92	160	242	232	290	85	112	227	105
Cms µm/N	230	140	160	100	90	66	310	90	80	70	51	370	330	170	440
BL Tm	11,38	15,9	13,8	17	16	20,2	12,6	14,5	18	25	32,3	12,5	13,2	16,2	11,6
Nominal Watt	200	300	350	1000	2x800	2x1000	350	600	800	2x400	2x500	250	400	450	300
Music Watt	300	450	500	1500	2x1200	2x1500	500	900	1200	2x600	2x750	375	600	650	450
X-max +/- mm	8	10	12	17	25	25	10	16	16	17	17	8	10	10	8
Installation depth mm	101	140	143	170	199	218	143	157	205	158	207	140	157	166	125
Installation diameter mm	181	237	283	283	283	357	237	283	357	283	357	236	282	351	278
External diameter mm	215	261	313	313	313	390	261	313	390	313	390	267	318	393	313

Model	HX10PHASE	HX12PHASE	RADION12FA	RADION15FA
Rdc Ohm	2x 3,1	2x 3,1	4,0	4,0
Qm	5,87	5,19	4,59	6,07
Qe	0,41	0,42	0,67	0,49
Qt	0,38	0,39	0,58	0,45
Fs Hz	33	27	24	23
Vas L	27	60	96	209
Mms g	140	180	112	203
Cms µm/N	160	185	270	210
BL Tm	21	22	11,5	15,9
Nominal Watt	2x 200	2x 250	400	450
Music Watt	2x 300	2x 375	600	650
X-max +/- mm	12	14	10	12
Installation depth mm	143	152	138	175
Installation diameter mm	237	283	282	360
External diameter mm	261	313	318	392



...MORE INFORMATION: [www.AUDIOSYSTEM-EUROPE.COM](http://www.AUDIOSYSTEM-EUROPE.COM)

# AUDIO

# SYSTEM



[www.AUDIOSYSTEM-EUROPE.COM](http://www.AUDIOSYSTEM-EUROPE.COM)